

"Two for Art"

The adventures of Bernie and Martha Marks with Sugar the Campin' Cat and BluCon, our Lazy Daze mini-motorhome

October 2010

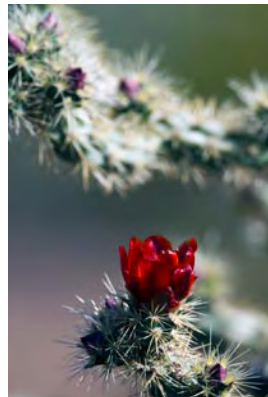
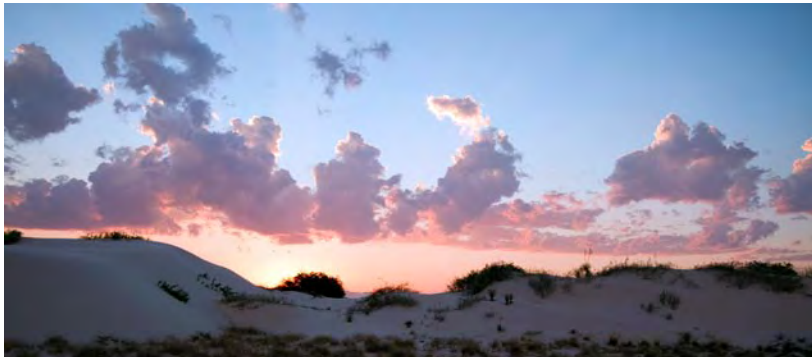
We traveled to Arizona last spring... savoring vast sweeps of desert wildflowers and flowering cacti as we camped, painted, and photographed. Heavy winter rains had provided an amazing floral display. Through the summer, we explored a range of hitherto-unexplored (by us) parts of New Mexico.



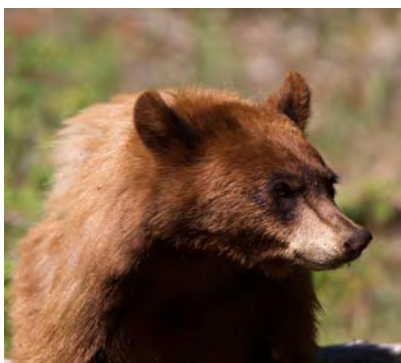
Bernie was in heaven painting the spectacular scenery at Organ Pipe Cactus National Monument... barely a mile north of the Mexican border. We camped there for a week, had no problems, and never felt threatened in any way.

This is a photo essay from three 2010 trips:

1. **Southern Arizona: cactus country** — Saguardo National Park, Tucson Mountain Park, Organ Pipe Cactus National Monument, the Chiricahua Mountains, and a bird-haven hamlet named Portal
2. **Southeastern New Mexico: Billy the Kid country** — Lincoln, Ruidoso, Cloudcroft, White Sands National Monument
3. **Northeastern New Mexico: Georgia O'Keefe country** — Cimarron Canyon State Park, Sugarite Canyon State Park, Eagle Nest, and Abiquiu Lake



Martha has begun pushing her photography beyond wildlife to capture images of the special places we visit. Shown is White Sands National Monument. At left is Bernie's painting of the same sunset.



On a mountain road in Cimarron Canyon, Martha happened on a Black Bear, wearing its usual Western cinnamon-colored coat. Neither she nor the bear was spooked, so from the edge of the road and the safety of her car—with camera and long bird lens propped on a beanbag in the window—she got some thrill-of-a-lifetime shots. The bear stayed busy slapping ants and grubs out of a fallen tree... so close that Martha couldn't ever get all of him in the frame.



Sugar and BluCon took it easy for a few days in July at this campsite (below) in Sugarite Canyon State Park, while Bernie and Martha explored the splendid park. Daytime temps rose into the 90s, so we were all grateful for that shady grove of oaks!





At right is Bernie's version of a sunset that took our breath away one evening at the Abiquiu Lake campground; at left, Martha's wide-angle shot of Río Chama. Both are located in the heart of Georgia O'Keefe country.



Martha took this "on the road" shot as Bernie drove BluCon past the spectacular Palisades Sill rock formation at Cimarron Canyon State Park. He reciprocated with a shot of her at BluCon's dinette as she processed her latest images, including the Pronghorn, Gunnison's Prairie Dog, and Lesser Goldfinch shown here.



For days, we enjoyed this 360-degree view of bowl-like Moreno Valley, high in the Sangre de Cristo Mountains near the town of Eagle Nest.



All this traveling and painting bore fruit when Bernie's first-ever show at Waxlander Galleries in Santa Fe opened Oct. 8. Many show paintings came from field studies he'd done on our trips this year and last.



We enjoyed this view of Moreno Valley through one of BluCon's three panoramic back windows. Below, Bernie's painting of the valley from a different angle.



Some of Bernie's paintings in the show were:

- "View of Eagle Nest" (right)
- "Cimarron Crossing" (bottom left, by Bernie's head, a larger finished work made from the field study shown just above it)
- "Río Chama Vista"
- "Autumn's Last Stand"



- "Vanishing Point"
- "Yavapai Point" (all at right)
- "Indian Market Scene" and two of his
- "Santa Fe Walls" series (bottom far right)
- "Poppies and Bluebonnets"
- "Roadside Bouquet" (bottom near right)



You can see more of Martha's and Bernie's art on their websites:

www.MarthaMarks.com

www.BernardMarksWatercolors.com